



# PRODUCT GUIDE **Deckboards**



ISSUE 4 MARCH 2011



PRESSURE TREATED TIMBER  
WITH BUILT-IN WATER REPELLENT





# Contents

Why Choose Q-Deck®?	2
Deckboard Options Explained	2
<hr/>	
Q-Deck® Deckboards	3
<hr/>	
Q-Deck® Lyptus Hardwood Deckboards	4
<hr/>	
Q-Grip® Deckboards	5
Bespoke Q-Grip® Deckboards	5
<hr/>	
Q-Deck® R Deckboards and Accessories	6
<hr/>	
Twinson® Deckboards and Accessories	7
<hr/>	
Appendix 1: Technical Information for Q-Deck® and Q-Grip®	8
<hr/>	
Appendix 2: Q-Deck® / Q-Grip® Warranty	9
<hr/>	
Appendix 3: Technical Information	10
<hr/>	
Appendix 4: Warranty for Twinson® & Q-Deck®R™	11



# Deckboards



**Q-Deck®** is the over arching brand for all our quality decking products. Conceived in 1999 it still represents our preservative pre-treated softwood range of decking products, manufactured from sustainable and certified softwood.



PRESSURE TREATED TIMBER WITH BUILT-IN WATER REPELLENT



No. 0325(+)

## Why Choose Q-Deck®?

- Quality selected, slow grown softwood
- 15 year performance warranty on all products
- Product range available as FSC/PEFC certified on request
- Tanalith® E Extra treated with built-in water repellent
- 6 deckboard profiles in up to 5.4m lengths. Some feature the capability to accept retro-fitted Q-Grip® Strip.
- TDA DeckMark® and DeckMark® Plus performance rated products

Note: Please consult your supplier of **Q-Deck®** deckboards if Chain of Custody is required.



A new choice of certified, naturally durable high quality hardwood decking.



High quality timber deckboards with enhanced grip using injection applied, resin bonded, slip resistant aggregate strips.

These deckboards are ideal for slip sensitive areas on domestic decks such as steps and on commercial decks such as pubs, hotels, schools and outdoor smoking areas and public places.



No. 0325(+)



Like **Q-Grip®** deckboards **Q-Grip® Strip** uses an injection applied, resin bonded, slip resistant aggregate but within a tiny moulding/strip that can be retro-fitted to specific **Q-Deck®** deckboards or to existing decking.



50% WOOD 50% PVC

A hollow core composite decking system, **Q-Deck® Twinson®** is made from wood and PVC giving you the advantage of technology whilst still maintaining some natural material and feel.



A hollow core composite decking system, **Q-Deck® R Recycled Composite Decking™** is made from rigid PVC which can be up to 95% recycled. The top of the profile has been capped with a wood polymer composite PVC, specifically designed for long term outdoor weathering. By combining wood and PVC, **Q-Deck® R** keeps the traditional timber decking values and reduces the need for maintenance.

# Q-Deck® Deckboards



Cambridge Deckboard



York 2 Deckboard



Canterbury 2 Deckboard



Winchester Deckboard



Pre-Grip Deckboard

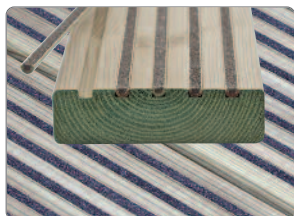
SIZE AND DESCRIPTION (ALL FINISHED SIZES)	TREATMENT SPECIFICATION	LENGTH	
20.5 x 95mm Cambridge	UC3	3.0-5.4m	
33 x 120mm York 2	UC3	3.0-5.4m	Accepts up to 5 Q-Grip® Strips
27 x 144mm Canterbury 2	UC3	3.0-5.4m	Accepts 2 Q-Grip® Strips
27 x 144mm Winchester	UC3	3.0-5.4m	
27 x 144mm Pre-Grip	UC3	3.0-5.4m	Accepts up to 7 Q-Grip® Strips
27 x 95mm Multi-purpose board	UC3	3.0-3.9m	
33 x 120mm Multi-purpose board	UC3	3.0-5.4m	
44 x 95mm Multi-purpose board	UC4	4.2m <sup>†</sup>	
44 x 144mm Multi-purpose board	UC4	3.0-4.8m <sup>†</sup>	

UC3 = Treated to Use Class 3 UC4 = Treated to Use Class 4

Please enquire with your nearest Q-Deck® stockist to ascertain what lengths are available.

<sup>†</sup> Subject to availability.

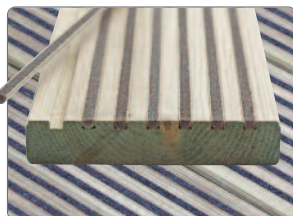
## Suitable for retro-fitting new Q-Grip® Strip™



Q-Deck® York 2 Deckboard



Q-Deck® Canterbury 2 Deckboard



Q-Deck® Pre-Grip Deckboard



Q-Grip® Strip

# Q-Deck® Lyptus Hardwood Deckboards

**Q-DECK® LYPTUS** reversible hardwood decking - 20 x 90mm (finished size after machining).

**Q-Deck® Lyptus** hardwood decking is made from cultivated eucalyptus hardwood trees, harvested in less than twenty years, offering unrivalled sustainability.

- Cherry wood appearance
- Darkens to rich walnut-like shades when oiled or wet
- Durable
- Strong
- Tough
- Kiln dried
- Sustainable PEFC certified hardwood
- Q-Deck® warranty does not apply.



Q-Deck® Lyptus reversible hardwood deck board - smooth side.



Q-Deck® Lyptus reversible hardwood deck board - reeded/ribbed side.

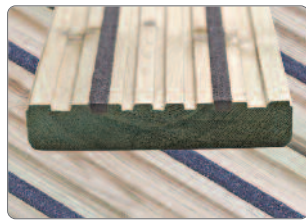
SIZE	DESCRIPTION (ALL FINISHED SIZES)	LENGTHS
20 x 90mm	Q-Deck® Lyptus reversible hardwood deck board	2.1 - 4.5m

Please enquire with your nearest Q-Deck® stockist to ascertain what lengths are available.

# Q-Grip® Deckboards



Q-Grip® Slip Resistant York



Q-Grip® Slip Resistant Canterbury



Q-Grip® York (precut)



Q-Grip® Canterbury (precut)



Q-Grip® Strip

SIZE AND DESCRIPTION (ALL FINISHED SIZES)	TREATMENT SPECIFICATION	LENGTH
33 x 120mm Q-Grip® York	UC3	3.0-5.4m
33 x 120mm Q-Grip® York (precut lengths)	UC3	895mm & 1200mm
27 x 144mm Q-Grip® Canterbury	UC3	3.0-5.4m
27 x 144mm Q-Grip® Canterbury (precut lengths)	UC3	895mm & 1200mm
5 x 8mm Q-Grip® Strip	UC3	1195mm

UC3 = Treated to Use Class 3

# Bespoke Q-Grip® Deckboards



Bespoke Q-Grip® Lyptus



Bespoke Q-Grip® Garapa



Bespoke Q-Grip® Heavy Duty

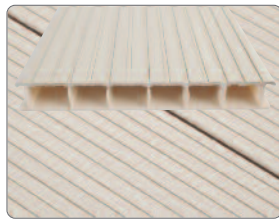
SIZE	DESCRIPTION (ALL FINISHED SIZES)
20 x 90mm	Bespoke Q-Grip® Lyptus hardwood deck board
19 x 140mm	Bespoke Q-Grip® Garapa hardwood deck board
44 x 144mm	Bespoke Q-Grip® Heavy Duty Style deck board (featuring hidden fix clip system)

For sizeable deck projects we can design and produce bespoke **Q-Grip®** slip resistant decking products. Please consult your **Q-Deck®** retailer who will pass the enquiry onto Hoppings Softwood Products for consideration. Bespoke **Q-Grip®** deckboards allow designers to choose the number, position and colour of **Q-Grip®** strips for a particular end use.

# Q-Deck® R Deckboards



Q-Deck® R Chocolate Lite



Q-Deck® R Vanilla Lite



Q-Deck® R Cappuccino Lite

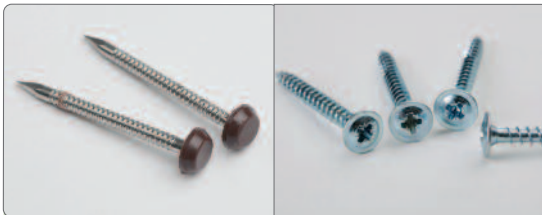
## Q-Deck® R Recycled Composite Decking

SIZE AND DESCRIPTION/COLOUR (ALL FINISHED SIZES)	LENGTH
30 x 236mm Chocolate Brown Lite (3.6m to order, 4.8m ex.stock)	3.6/4.8m
30 x 236mm Vanilla Lite (available to order only)	3.6/4.8m
30 x 236mm Cappuccino Lite (available to order only)	3.6/4.8m

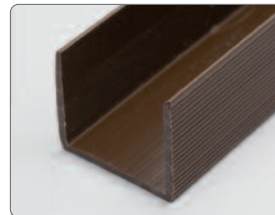
## Accessories



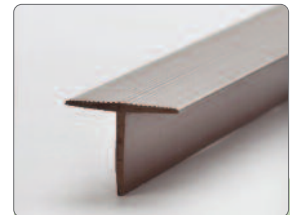
Q-Deck® R Decking clips  
100 per box



Q-Deck® R Fascia/Starter Kit - Consisting of x100 colour coded polypins and x25 60mm pan headed stainless steel screws



30 x 30 x 2440mm colour coded Q-Deck® R fascia U channel



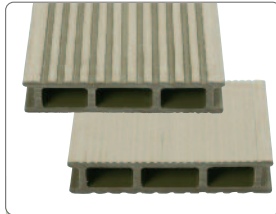
30 x 30 x 2440mm colour coded Q-Deck® R Cover T Channel (to order).

# Twinson® Deckboards

**50% WOOD 50% PVC**



Apricot Brown Deckboard



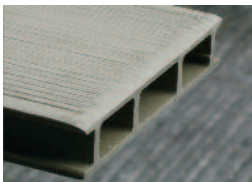
Olive Green Deckboard



Please note: Colour samples are reproductions only and can deviate from the actual products, new or aged in situation.

## Composite Deckboard 9555

SIZE AND DESCRIPTION/COLOUR (ALL FINISHED SIZES)	LENGTH	CODE
28 x 140mm Apricot Brown (4.5m ex stock, 6.0m to order)	4.5/6.0m	9555-506
28 x 140mm Olive Green (available to order only)	4.5/6.0m	9555-507
28 x 140mm Riverstone Grey (available to order only)	4.5/6.0m	9555-509
28 x 140mm Bark Brown (available to order only)	4.5/6.0m	9555-504
28 x 140mm Hazelnut Brown (available to order only)	4.5/6.0m	9555-503
28 x 140mm Liquorice Black (available to order only)	4.5/6.0m	9555-502
28 x 140mm Turf Brown (available to order only)	4.5/6.0m	9555-505



Please confirm Q-Deck® Twinson full product code when ordering. If uncertain please request a sample as we cannot be held responsible for incorrect colour choice/specification.

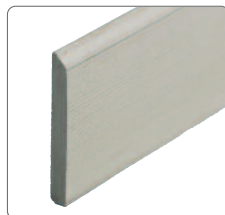
Q-Deck® Twinson deckboards are supplied 10mm over length for end trimming purposes (as shown here).



Ground Batten



Starter Rail



Plinth



Fixing Bracket

SIZE AND DESCRIPTION (ALL FINISHED SIZES)	LENGTH	CODE
35 x 48mm Twinson Ground Batten (available to order only)	6.0m	9552
Twinson Aluminium Starter Rail (available to order only)	3.0m	2761
10 x 78mm Twinson Plinth (available to order only)	6.0m	9590
Twinson Fixing Bracket & Screws (100 sets per box)	-	9490
Twinson Aluminium 'F' Section (available to order only)	6.0m	9543
Twinson Deckboard End Cap (available to order only)	-	9557

# Appendix 1

## Technical Information for

### Q-Deck®/Q-Grip®

#### TREATMENT RELATED TOLERANCES FOR OUTDOOR WOOD PRODUCTS

When Q-Deck® and Q-Grip® products are pressure pre-treated with TANALITH® E they swell beyond the finished size. This can be as much as 4% of the original size and depends on the moisture content before treatment and the direction of the grain. Therefore, products can end up slightly different sizes after treatment.

As these products dry back to their moisture content before treatment, they will shrink back to their original machined finished size. During long periods of dry summer weather the moisture content of the decking products can drop below their original moisture content before treatment. In this situation they can shrink up to as much as 2.5% of their original machined size and it is normal and acceptable to get a degree of surface checking.

In autumn/winter when the weather gets 'wetter' the moisture content of these products can rise back to similar levels before treatment and as a result the affects of surface checking often disappear as they close.

#### USE CLASSES

Timber used in an outside application, generally needs to be pressure pre-treated to meet pre-determined Use Classes (UC).

##### Use Class 3 (UC3)

External building, fencing and landscaping timbers used out of ground contact.

##### Use Class 4 (UC4)

External building, fencing and landscaping timbers used in ground contact.

We have treated all our outdoor wood products to a specific Use Class to match its likely end use application.

#### PERFORMANCE/STANDARDS SPECIFICATION

Q-GRIP® deckboards are tested to BS 7976-2:2002, to provide a 'low potential for slip' in wet conditions, as advised by the UK Slip Resistant Group classifications.

#### Testing (skid resistance)

Wet slip-resistance test results for TRP (type 55):

Q-Grip® York, 75 pendulum test value;

Q-Grip® Canterbury, 85 pendulum test value.



They are also DeckMark® Plus accredited. DeckMark® Plus is a new initiative from the Timber Decking Association to meet requests from architects and commercial designers for formal performance guidance for the slip resistance rating of deckboard surfaces or the load bearing capabilities of structures like parapets.

DeckMark® Plus is an extension of the TDA's DeckMark® quality assurance scheme. Introduced in 2000, DeckMark® was designed to give reassurance to specifiers and consumers that timber deck components have been manufactured to established quality standards. DeckMark® Plus builds on this widely adopted scheme to combine a quality accredited product with a formal performance rating. For example DeckMark® Plus now enables architects and designers to specify boards that have been independently slip tested in line with BS7976 and provide a 'low slip potential' in both wet and dry conditions.

# Appendix 2

## Warranty Information for

### Q-Deck®/Q-Grip®

#### Q-DECK® AND Q-GRIP® 15 YEAR WARRANTY

Hoppings Softwood Products Plc hereby certify that when fixed appropriately in accordance with the relevant design guidance **Q-Deck®** timber decking products and **Q-Grip®** timber products shall be deemed under warranty for 15 years from the date of supply.

#### CONDITIONS OF WARRANTY

The component shall have been supplied by Hoppings or by an authorised **Q-Deck®/Q-Grip®** retailer. Proof of date and purchase of the timber and **Ensele®** end grain preservative or **Ronseal®** end grain preserver or **Hickson®** Decor End Grain Preservative must be produced to this effect.

Only **Q-Deck®** sub-frame timbers are deemed suitably fit for use with **Q-Deck®/Q-Grip®** components. This warranty explicitly excludes the use of non **Q-Deck®** sub-frame components as Hoppings cannot control the specification or quality of such products and these components could expose correctly preservative treated timber to a greater degree of risk of fungal decay/insect attack.

Timber should always be treated in its final form. However, any timber exposed by cross-cutting, notching or boring after treatment must be liberally swabbed with two coats of Arch **Ensele®** brush-on end grain preservative or **Ronseal®** end grain preserver or **Hickson®** Decor End Grain Preservative, in accordance with the Arch Code of Practice for **Tanalith® E** pressure treated timber or the manufacturers instructions. Where possible cross-cut ends must not then be placed in the hazard zone of the design (ie. in ground contact).



The component shall have been fixed and maintained in accordance with appropriate guidance in force at the time.

eg. the Timber Decking Manual published by the Timber Research and Development Association and the current **Q-Deck®/Q-Grip®** point of sale leaflet and website.

#### EXCLUSIONS OF WARRANTY

- **Q-Deck®/Q-Grip®** products placed in fresh or salt water contact.
- **Q-Deck®/Q-Grip®** products supplied for installation outside UK mainland.
- **Q-Deck®/Q-Grip®** products removed from their original installation and re-used at a new location.
- Degrade caused by poor maintenance, such as allowing the accumulation of dirt and other organic matter to occur, or by a material change in the installation environment i.e. where a Use Class 3 component is 'in effect' being unnecessarily subjected to Use Class 4 conditions.
- Failure due to **Q-Deck®/Q-Grip®** components being used for any purpose for which they were not designed.
- The adhesion of **Q-Grip®** strip to associated **Q-Deck®** and/or non-**Q-Deck®** decking boards.

#### TRANSFERABILITY OF WARRANTY

The **Q-Deck®/Q-Grip®** 15 year warranty is fully transferable to new owners of the installed deck without notification.

#### UNDERTAKING

The warranty is for the cost of re-supply, by Hoppings, of a component that is proven to have failed as a result of fungal decay or insect attack, **FREE OF CHARGE**. It does not cover the costs of removal or reinstatement of such components or consequential costs or loss due to failure of the component.

The term 'fungal decay' as used in the warranty refers to wood destroying fungi that feed on and degenerate the wood cell walls. It excludes staining and mould fungi associated with the weathering of wood.

The term 'failed' refers to damage caused by fungi to such an extent that the component is **no longer fit for purpose**.

#### STATUTORY RIGHTS

This warranty is in addition to the purchaser's normal statutory rights.

---

The warranties are wholesaler/manufacturer to consumer/buyer warranties.

However the initial raising of a complaint should be directed to the authorised retailer from where the goods were purchased. The complaint should be made in writing/e-mail and must include proof of purchase ie. a copy or scan of the original invoice.

# Appendix 3

## Technical Information for Twinson®

Density	<b>1400Kg/m<sup>3</sup></b>	
Weight	<b>2.5Kg/m</b>	
Impact resistance	<b>3-6 Kj/m<sup>2</sup></b>	(ISO 6603-2)
Brinell hardness 3000N	<b>120 N/mm<sup>2</sup></b>	(EN1534)
Flexural E-Modulus	<b>5000-7000 N/mm<sup>2</sup></b>	(EN310)
Bending Strength	<b>38 N/mm<sup>2</sup></b>	(EN310)
Water absorption 24hrs	<b>0.2-0.6%</b>	(EN317)
Linear expansion	<b>0.021 mm/m °C</b>	(ISO 11359-2)
Durability class	<b>1</b>	(EN350)
Vicat softening point	<b>85-95 °C</b>	(EN ISO 306/B50)
'Wet' slip resistance tested	<b>*59 USRV</b>	(EN 1339 annex 1)

\*Where a value of above 45 rates a product as having a 'low' potential for slip in wet conditions. Value of 35-44 'moderate', 25-34 'high' and 0-24 'very high' potential for slip.

## Technical Information for Q-Deck® R

Width	<b>236mm</b>	
Depth	<b>30mm</b>	
Density	<b>1500Kg/m<sup>3</sup></b>	
Weight	Lite - <b>2.77Kg/m</b> Heavy Duty - <b>3.52Kg/m</b>	
Impact strength @23°C	<b>65 J/m<sup>2</sup></b>	(ISO 180)
Rockwell hardness R Scale	<b>115 N/mm<sup>2</sup></b>	(ASTM)
Tensile Modulus 1% strain at 23°C	<b>2200 MN/m<sup>2</sup></b>	
Tensile Strength @ Yield	<b>37-42 MPa</b>	(BS2782 Method 320C)
Coefficient of Thermal Expansion (°C)	<b>0.06x10<sup>-3</sup></b>	
Heat Deflection Temperature (EEC Directive BS2782 - PPM °C)	<b>&lt;147</b>	(Method 81/432/CEE 121A)
Vicat softening point	<b>77-79 °C</b>	(BS EN ISO 306 Method B50)
Water absorption	<b>Impervious</b>	
Wet Slip Resistance tested		
Type 55 P.T.V. Value	Lite - <b>42</b>	(BS 7976-2: 2002)

Lite and Heavy Duty providing a low and moderate potential for slip in wet conditions as advised by the UK Slip Resistance group classifications.

Note: However please note due to its impervious property Q-Deck® R is the easiest composite deckboard to clean and maintain which is a very important attribute to consider when minimising the risk of slip.



# Appendix 4

## Warranties for Q-Deck®R and Twinson®

### Q-DECK R AND TWINSON® COMPOSITE DECKBOARDS 25 YEAR WARRANTY

For a period of twenty-five (25) years from the date of original purchase, Q-Deck® R and Twinson® products shall not split, splinter or suffer structural damage as a sole and direct consequence of termites, insects or soft rotting micro-fungi.

### LIMITATIONS

For a period of ten (10) years from the date of original purchase, Q-Deck® R and Twinson® products shall not break. However this warranty explicitly excludes occurrences where the break occurs or may have occurred as a consequence of impact loads or poor design/construction methods. This warranty applies to the use of products in normal residential use.

Contact Hoppings Softwood Products on 01992 578877 if you require a warranty for a deck that is to be created in a commercial type situation.

### WHAT'S NOT COVERED

This warranty does not provide protection against misuse, abuse, neglect or improper storage or handling. Hoppings cannot be held responsible for product failure due to improper installation or failure to abide by Hoppings fitting instructions. It also excludes the discolouration/staining of the products due to:

- Air borne pollutants, such as mould, algae, leaf litter and any deposits from plants and trees.
- Any other foreign substances that are not listed in the current downloadable 'Composite decking' PDF document on [www.qualitydecking.co.uk](http://www.qualitydecking.co.uk)

The warranties are wholesaler/manufacturer to consumer/buyer warranties.

However the initial raising of a complaint should be directed to the authorised retailer from where the goods were purchased. The complaint should be made in writing/e-mail and must include proof of purchase ie. a copy or scan of the original invoice.